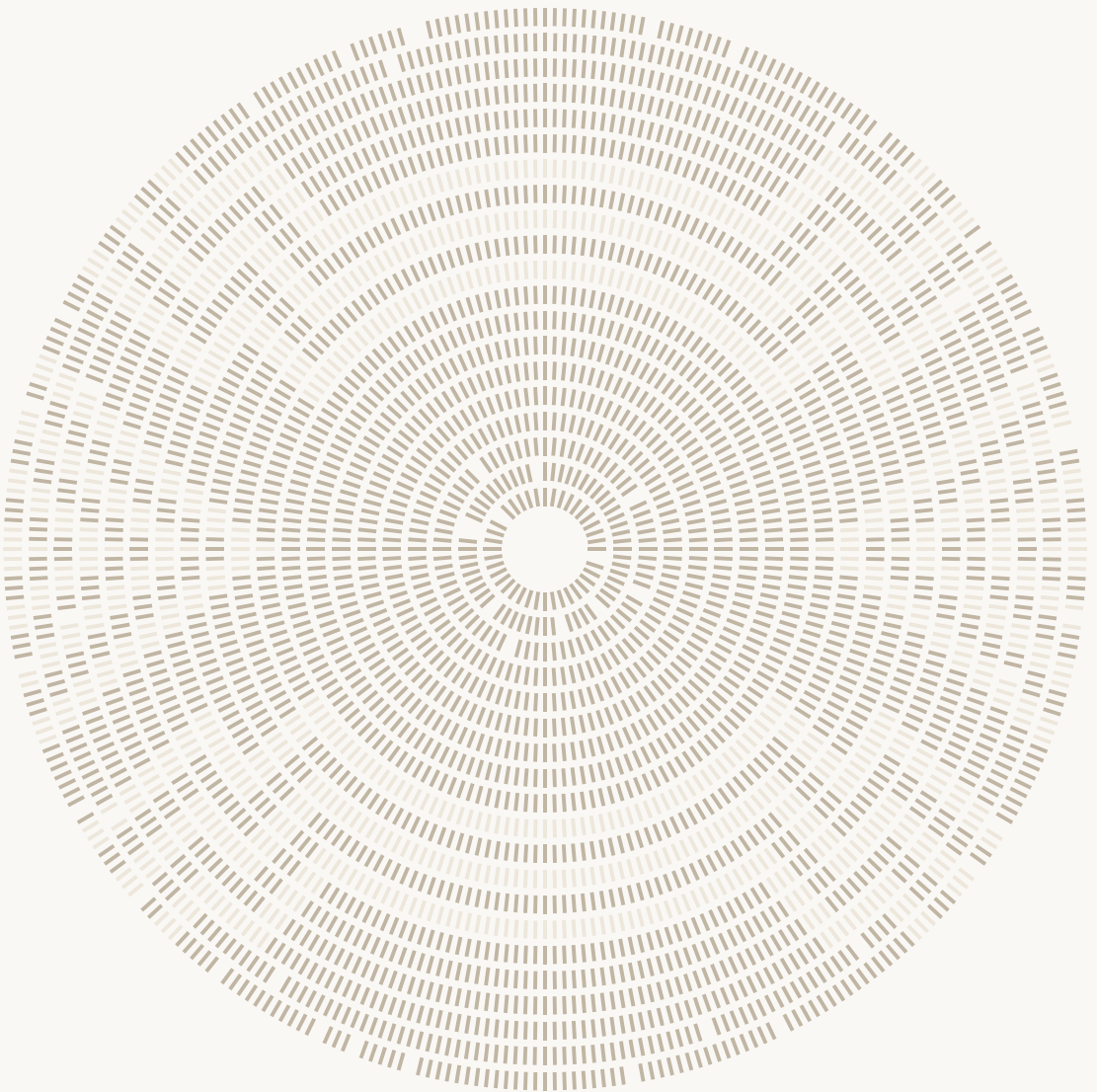


*One&Only*  
Cape Town



# One&Only Cape Town is an oasis of elegance amidst the vibrant playground of one of the world's most fascinating cities.

A destination unto itself with captivating views of Table Mountain, the chic design and contemporary African flair of this urban resort finds a natural home in the heart of Cape Town.

The resort's seven-storey Marina Rise features 91 spacious rooms and suites – its crescent-shaped architecture created so all guestrooms and suites enjoy either uninhibited views of the picturesque harbourside or iconic Table Mountain. Two lushly landscaped private islands at the centre of the waterfront feature 40 Island suites and a tranquil spa.

Central to exciting nightlife and entertainment, One&Only Cape Town serves as a gateway to the uniquely rare adventures of South Africa such as wildlife safaris, wine country excursions and endless water play along pristine beaches.



One&Only Cape Town

## Introduction

The hallmarks of One&Only – supreme location, authentic style, genuine hospitality and a lively energy – are discovered at the new One&Only Cape Town. With the iconic Table Mountain standing guard on the horizon, the scene is set for memorable moments in one of the world's most visited destinations.

### Location

One&Only Cape Town is situated in the heart of the city's fashionable Victoria & Alfred Waterfront. Cape Town itself is located at the foot of Table Mountain at the northern end of Africa's Cape Peninsula, where the Indian and Atlantic Oceans meet.

A year-round destination, Cape Town enjoys a four season Mediterranean climate with mild winters and pleasant summers.

Approximately 25 minutes from Cape Town International Airport; transfers available by taxi, One&Only car service or helicopter.

## Accommodation

Clean lines, contemporary art and dark African woods accentuate the 131 spacious rooms and suites. Oversized baths are complete with rain shower, private water closet and dual marble vanity. Guests enjoy dedicated butler service 24-hours a day.

All accommodations feature complimentary Wi-Fi as well as multimedia entertainment system featuring satellite flat screen TV, DVD/CD player, videos on demand, iPod/iHome docking station, Nespresso machine, in-room safe and in-room business amenities that include multi-adaptor, fax/computer connection, and a four-phone, two-line communications system.

### Marina Rise

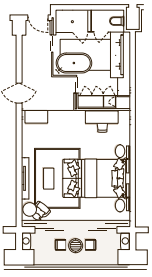
Each of the 91 rooms and suites within Marina Rise features expansive glass doors that lead onto private balconies and offer views of Table Mountain or the Victoria & Alfred Waterfront. All are indulged by the discreet services of a dedicated butler. Sumptuously appointed oversized baths are complete with rain shower, private water closet and dual vanity.

78 Marina Rooms (63m<sup>2</sup>/678ft<sup>2</sup>)  
4 (1-bedroom) Marina Suites (123m<sup>2</sup>/1,324ft<sup>2</sup>)  
7 (1-bedroom) Marina Grand Suites (155m<sup>2</sup>/1,668ft<sup>2</sup>)  
Table Mountain Suite (2-bedroom) (316m<sup>2</sup>/3,401ft<sup>2</sup>)  
Presidential Suite (2-bedroom) (383m<sup>2</sup>/4,123ft<sup>2</sup>)  
One&Only Penthouse (4-bedroom)  
(1,275m<sup>2</sup>/13,724ft<sup>2</sup>)

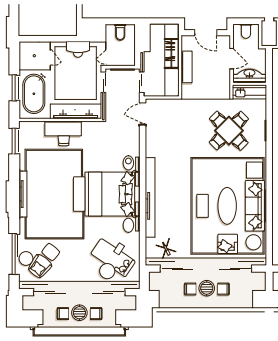
### Island

Providing the ultimate private escape, the 40 island suites are located on a secluded and lushly landscaped island surrounded by the waterway and featuring large outdoor patios.

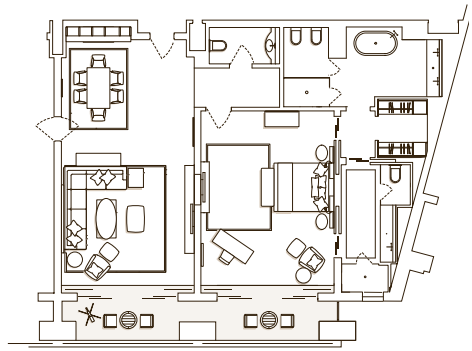
32 Island Junior Suites (73m<sup>2</sup>/786ft<sup>2</sup>)  
4 (1-bedroom) Island Suites (115m<sup>2</sup>/1,238ft<sup>2</sup>)  
4 (2-bedroom) Island Grand Suites (254m<sup>2</sup>/2,637ft<sup>2</sup>)



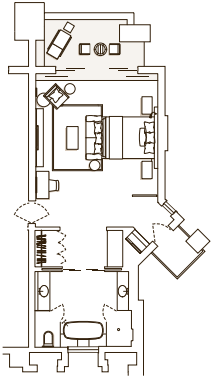
**Marina Room**  
63m<sup>2</sup>/678ft<sup>2</sup>



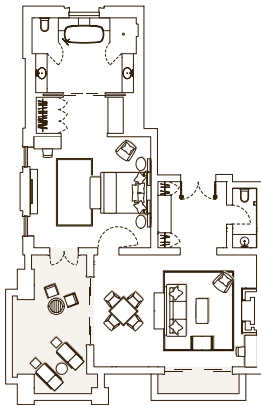
**1-bedroom Marina Suite**  
123m<sup>2</sup>/1,324ft<sup>2</sup>



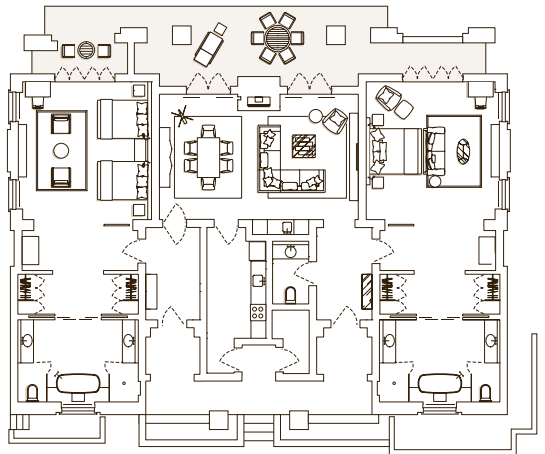
**1-bedroom Marina Grand Suite**  
155m<sup>2</sup>/1,668ft<sup>2</sup>



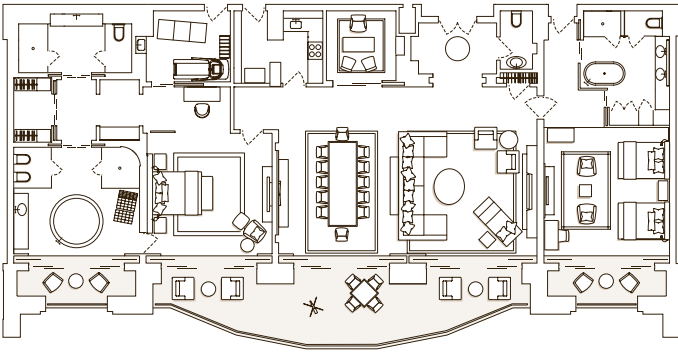
**Island Junior Suite**  
73m<sup>2</sup>/786ft<sup>2</sup>



**1-bedroom Island Suite**  
115m<sup>2</sup>/1,238ft<sup>2</sup>

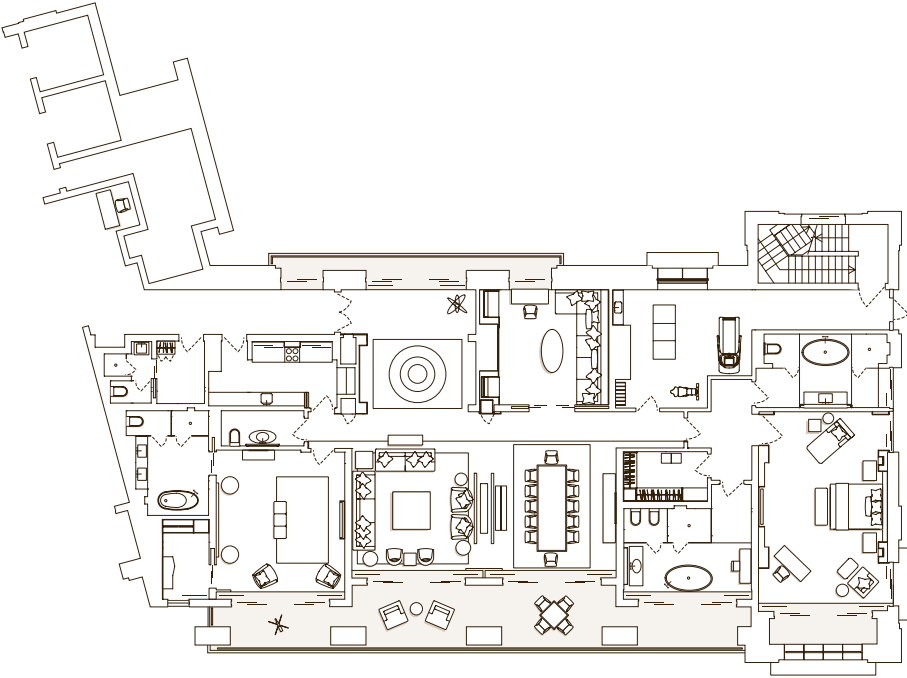


**2-bedroom Island Grand Suite**  
254m<sup>2</sup>/2,637ft<sup>2</sup>



**Table Mountain Suite with 2 bedrooms**

316m<sup>2</sup>/3,401ft<sup>2</sup>



**Presidential Suite with 2 bedrooms**

383m<sup>2</sup>/4,123ft<sup>2</sup>



Vista

## Restaurants and bars

### **Maze by Gordon Ramsay**

Modeled after its British namesake, *maze* features a tasting menu using the beautiful flavours of authentic South African ingredients. Menu features seafood, meats and specialty South African dishes. Signature *maze*-style cuisine features an imported broiler that heats steaks to a fiery 650°C to enhance their flavour. The 170 cover dining area features an open kitchen, ideal for show grilling and roasting. *Maze* is open throughout the whole day, offering breakfast, afternoon and evening dining meals, as well as a special children's menu.

### **Wine Loft**

A spectacular tri-level wall of glass and steel where guests discover a magnificent collection of over 5,000 bottles and 600 references, with particular emphasis given to prestigious vintages as well as up-and-coming South African boutique wines. The mezzanine tasting room offers an exceptional introduction to the region's vineyards with almost 80 wines available by the glass, including rare South African wines. Private dining available for 10 guests.

### **Nobu**

World-class master chef Nobuyuki 'Nobu' Matsuhisa expands his eponymous empire with the debut of his first restaurant in Africa. His innovative blend of classically styled Japanese cuisine incorporates fresh South African seafood and indigenous spices. The upper level Nobu bar features the largest selection of Sakes in Africa, including plum wines, Japanese beers and a selection of Sake and Shochu based cocktails. A sweeping fan-like staircase leads to the 104 cover dining area and sushi counter.

### **Isola**

Poolside casual dining restaurant featuring a combination of Mediterranean and South African cuisine as well as wood fired pizza and simply grilled seafood.

### **Vista**

Situated in the centre of the lobby at the resort is Vista, which as its name suggests, offers incredible panoramic views of Table Mountain. Here, guests come together to enjoy an à la carte continental breakfast menu, a selection of creative light snacks throughout the day and a spectacular High Tea with a choice of 35 brews. Evenings feature an innovative blend of cocktails from around the world.

### **In-Room Dining**

For an ultimate indulgence, enjoy an elaborate four- to five-course meal from *maze* by Gordon Ramsay, served in quiet comfort as an expert butler creates a sublime ambience with music, candles and flowers – perhaps even drawing a bath with aromatic salts and essential oils. In-Room Dining also appeals to guests desiring a quick bite to eat or a late night snack.

## Leisure facilities

### **One&Only Spa**

Located on its very own private island at the heart of One&Only Cape Town, lies an exclusive, unparalleled spa retreat. An oasis of serenity surrounded by water and lush vegetation, One&Only Spa offers tailored holistic experiences, ranging from pure relaxation to unique and signature wellness 'journeys'.

Island pool





NEO

The spa features 12 treatment rooms; private wet areas for both single and couples treatments; Two vitality pools with air massage recliners; sauna and aroma-steam rooms, and ‘experience’ showers with three different kinds of water settings complement the relaxation spaces.

A hair salon, two beauty suites and the celebrated Bastien Gonzalez pedicure and manicure studios provide additional facilities.

**Fitness Centre**

The 200m<sup>2</sup>/2,152ft<sup>2</sup> fitness centre is fully equipped with Technogym® Excite™ and Luxury Personal Selection™ ranges supported by the Wellness System™. A connecting studio features Kinesis™ and FLEXability™ for functional training and complete stretching. One-to-One personal training is available by an expert team. Customized

programmes developed for each individual include full health & fitness assessments; aqua training; stretching; swimming; PowerPlate; Core Stability; Boxing Training and Yoga.

**Island Pool**

A 350m<sup>2</sup>/3767ft<sup>2</sup> free-form, infinity-edge pool featuring private sitting areas with double chaise lounges ideal for sunbathing or relaxing under shaded pavilions.

**NEO**

This specialty boutique offers local finds and treasures as well as the most highly sought-after fashion labels in the world. Complete with a champagne bar and iPod station, the shop is not only a place for retail therapy, but somewhere to relax and socialize.

**Kids and teens facilities**

The KidsOnly Club offers complimentary fully supervised programmes for kids, ages 4-11 years. KidsOnly features arts and crafts, a movie and video games lounge, garden and computer lounge with the latest technology. Dedicated staff provide personal service and organise activities for teenagers including fitness programmes and spa treatments for kids, ages 12-17 years.





**One&Only Cape Town**

Victoria & Alfred Waterfront

Reservations:

South Africa + 27 21 431 5800

Within US 1-888-877-7528

Outside US + 1 954 809 2751

Maze Reservations + 27 21 431 5222

Nobu Reservations + 27 21 431 5111

Spa Reservations + 27 21 431 5810

Reservations@oneandonlycapetown.com

Resort Telephone + 27 21 431 5888

Resort Facsimile + 27 21 431 5230

*One&Only* Resorts and *Ø* are trademarks of Kerzner International Limited.

One&Only is a portfolio of distinctive and memorable resorts in The Bahamas, Cape Town, Dubai, Maldives, Mauritius and Mexico.

For more information, visit **oneandonlyresorts.com**

©One&Only Resorts 2009

**For our travel partners:**

**Amadeus**  
00-CPT0AO

**Sabre**  
00-105273

**Apollo/Galileo**  
00-10911

**Worldspan**  
00-CPT0A